



**Burson**

**Playmate 2**

**Headphone Amplifier / Pre Amplifier / USB DAC**

**User Manual**

*Register for warranty Ref. page 9 for details*

## ***Thank You.***

All of us at Burson Audio would like to thank and congratulate you for purchasing the Burson Playmate 2. We sincerely believe that your new Burson Playmate 2 is an intelligent investment and that it will bring you many years of musical enjoyment and satisfaction.

We understand how eager you are to begin listening but before you start we want you to become familiar with the full capabilities of the Burson Playmate 2. Before powering the device, we encourage you to look through the manual.

## ***Our Philosophy***

The less the equipment tampers with the music, the greater the purity and musical enjoyment become. This has been the core design philosophy of Burson Audio since 1996. If the equipment is honest and transparent, then the tempo, dynamics and tone will materialize as a natural expression of the music and it becomes unnecessary to ‘flavor’ the original sound. We believe that this ideal can never be achieved through the use of standard circuitry building blocks such as opamps, IC regulators or even standard transformers. Instead, we work towards this ideal through the research and development of customized solid-state circuitries that are developed specifically to suit our applications, with each and every component be pushed to their performance peak. Only then will the end result be consistent with our philosophy and standards.

***Team Burson***

## Unpacking

After carefully unpacking your Burson Playmate 2, inspect for any shipping damage and call your dealer immediately if any is found. Do not plug your Burson Playmate 2 into any outlet if you find shipping damage. Please save all packing materials so the unit can be easily and safely shipped if the need arises.

## The Package

- Playmate 2 Pre Amp / DAC
- External Power Supply 24V 3A
- USB Data cable
- Remote control unit (optional)
- Hex Key / Spare Fuse / Spare IC opamps for troubleshooting

## Basic Setup

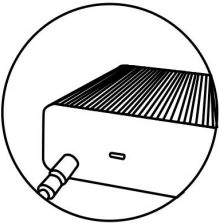
### Four Easy Steps to Setup Your Burson

①



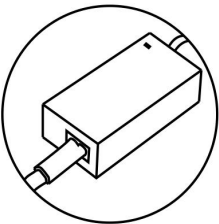
Scan this QR code or visit the link below to download your user manual and warranty registration instructions:  
[www.bursonaudio.com/downloads/](http://www.bursonaudio.com/downloads/)

②



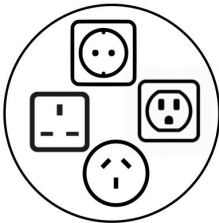
Plug the 24V barrel plug into the Burson.

③

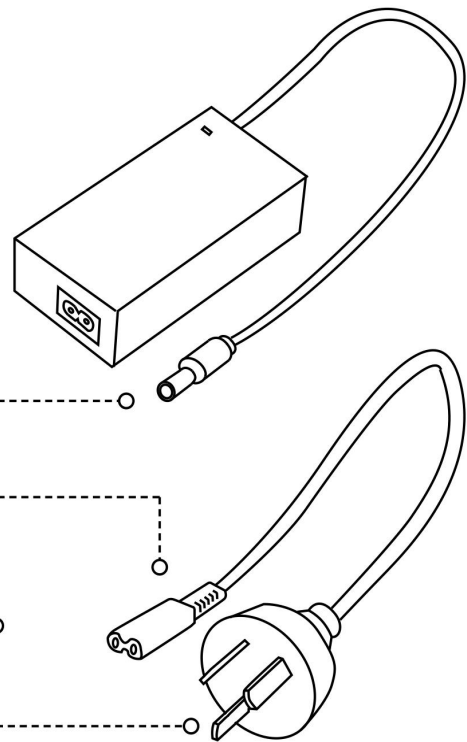


Connect the figure 8 power cable to the power supply.

④



Plug the power cable into your wall socket and power up your Burson.



## Connections



## **USB interface software setup guide.**

When connecting the Playmate 2 to OSX, iOS or Android systems, no driver is needed.

For use with Windows OS, a driver is required. You can download a driver from our website:

<https://www.bursonaudio.com/downloads/>

Please download the latest Windows driver: [Burson\\_UsbAudio\\_v4.59.0\\_2019-04-02\\_setup.exe](#)

## **Break-in, Warm-up and Caring.**

The sound of the Burson Playmate 2 improves steadily within minutes after powered-up. Depending on the resolution of the system and the attentiveness of the listener, you may find that the sound continues to improve over the first weeks of operation.

Never connect or disconnect the RCA or XLR output cables from the Playmate 2 while music is playing. This could damage the Playmate 2. Please stop the music source before disconnecting.

## **Menu Items**

|                  |   |   |
|------------------|---|---|
| Input            | USB   | PCM 32bit 786K / DSD512                               |
|                  | Toslink   | PCM 24bit 192K  |
| Output           | Pre Out   | Pre Amp output with volume control                    |
|                  | HP Out  | Headphone Output                                      |
| Gain Level       | High* / Low   | High / Low  |
| FIR Filter       | Brickwall, CMFR, Reserved, AP Fast*, MP Slow, MP Fast, LP Slow, LP Fast | See FIR Filter section below                          |
| DPLL (DSD)       | DPLL Off / Low / Mid / High*  | DSD file playback setting                             |
| DPLL (PCM)       | DPLL Off / Low / Mid / High*  | PCM file playback setting                             |
| DE-EMPHASIS      | On / Off*   | Only turn on if your source is a cassette tape player |
| RESTORE SETTINGS | YES / NO  | This resets the unit back to default factory settings |

Default selection marked with\*

## **Changing Menu Items**

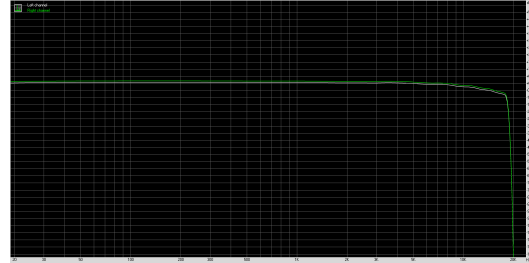
- To change the menu item settings press the Menu button to access the Menu.
- Use the rotary Volume control to scroll through the menu items.
- Select a Menu item by pressing the Volume dial inwards.
- Additional choices can be made using the scroll and select function of the Volume dial.
- Press the Menu button to remember the setting and escape from the Menu.

# FIR Filters

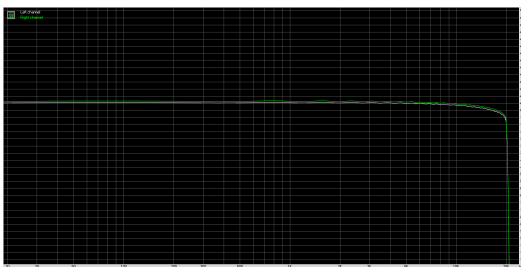
See a visual representation of the various FIR filter settings below.



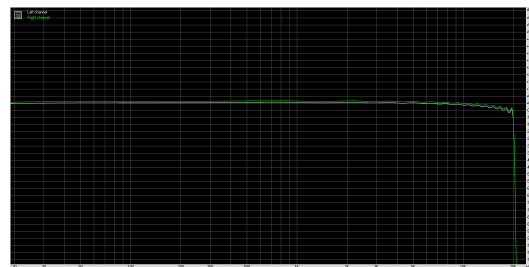
Break Wall



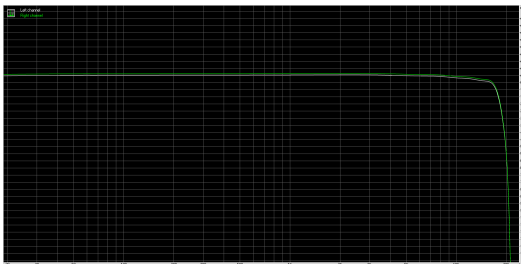
CMFR



Reserved



AP Fast



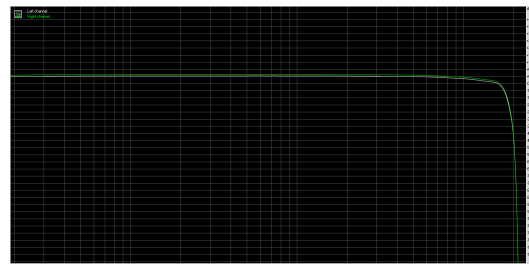
MP Slow



MP Fast



LP Fast



LP Slow

FIR Filters are part of the digital process built in the DAC chip. These filter settings mainly affect high-frequency roll-offs usually in the 18khz and above frequency range. The effect of the filter settings is very subtle and may not always be audible.

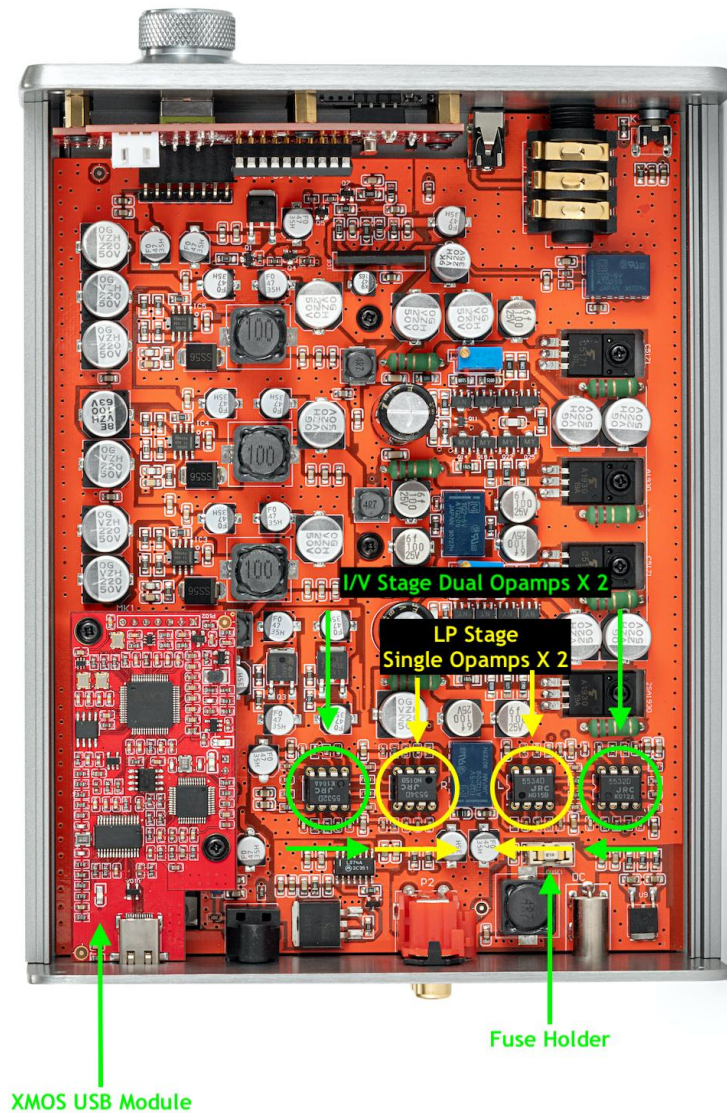
## ***Opamp Change & Upgrade***

The Burson Playmate 2 allows opamp changing to customise its sound to the owner's preference.

When changing opamps, please be aware of the following:

1. The opamp power supply voltage in the Burson Playmate 2 is +/-15V. Always remove the power supply before opening up the unit.
2. There are 2 dual opamps and 2 single opamps inside the Playmate 2.
3. Please refer to the following diagram for the position and correct orientation of the opamps. The notch at the top of the opamp indicates the orientation of the opamp within the socket. Match it to the existing opamp.
4. The case can be opened by removing 4 hex screws at the bottom of the case. Use the supplied hex key.





## ***The Initial Powering up***

Make sure volume control has been turned to minimal when using your Playmate 2 for the first time. Always power on your source machine first and your power amp last. When powering down your system reverse these steps.

To select the Source - Rotate the Volume dial until the desired input is shown and press inwards to Select.

## ***Free Warranty Extension***

All Burson Audio products are covered by 24 months + 12 months of warranty (See conditions below).

<https://www.bursonaudio.com/warranty/>.



## Warranty Conditions

Burson Audio warrants that this product shall be free from defects in materials and workmanship for The warranty period begins at the date of sale and is subject to the following requirements and understandings:

1. This is a non-transferable warranty.
2. This product is only warranted in the country of original sale by Burson / authorised dealer.
3. The product must not have been modified in any manner whatsoever, or the warranty is immediately voided.
4. The product must not have been stored in a humid, damp environment; nor subjected to weather, water, or salt spray.
5. During the warranty period, Burson will replace a defective Burson Composer 3 with a similar available product, at no cost to the owner for labour, materials, and shipping charges from Burson.
6. Burson shall not, under any circumstances, be liable for any incidental or consequential damages arising from the loss of property or other damage or losses due to the failure of a Burson Composer 3. Burson will not pay for loss of use or inconvenience caused by the failure of a Burson Composer 3. Burson will not pay for damage caused to other audio components caused by the failure of the Burson Composer 3 within the limits allowed by Australian Law.
7. The compatibility between our USB receiver and your computer is dependent on software drivers provided to Burson by the USB chip manufacturer. Therefore Burson cannot guarantee the compatibility of our USB receiver during or after the warranty period.
8. The use of XLR to RCA adaptors will void the warranty.



Warranty Registration